



PRODUCT LINE UP



SMEC Co., Ltd.

157-10, Goldenroot-ro, Juchon-myeon, Gimhae-si,
Gyeongsangnam-do, Republic of Korea
Tel. +82 55 340 4800 / Fax +82 55 340 4740
www.smecmachinetools.com

SMEC Europe GmbH.

Hammer Landstr. 113, 41460 Neuss,
Germany
Tel. +49 2131 531 4012
www.smec-europe.com

SMEC America Corp.

14 W Forest Ave, Englewood, NJ
07631, U. S. A
Tel. +1 201 227 7632
www.esmecamerica.com

www.smecmachinetools.com

Making a Smarter World

A company with a dream and a future, an innovative technology company based on research SMEC is leading the way to creating a cutting-edge future.



LM Guide Type Turning Center



5~8inch High Efficiency Gang Type Turning Center

():Option

Model	Chuck	Spindle Speed (RPM)	Spindle Motor (Cont./Max) (KW)	Max. Turning Dia. (mm)	Max. Turning Length (mm)	Draw Tube ID (mm)	Swing over Bed (mm)	Travels (mm)		Rapid Travels Rate (X/Z)	Number of Tool (ea)
								X-Axis	Z-Axis		
PL 1600G	6"	6,000	11/15	170	A:300 B:270	52	540	450	300	30/36	3(6)



6~8inch Compact Turning Center

():Option []:Mill Type

Model	Chuck	Spindle Speed (RPM)	Spindle Motor (Cont./Max) (KW)	Max. Turning Dia. (mm)	Max. Turning Length (mm)	Draw Tube ID (mm)	Swing over Bed (mm)	Travels (mm)		Rapid Travels Rate (X/Z)	Number of Tool (ea)
								X-Axis	Z-Axis		
NS 2000[M]	A:6" B:8"	A:6,000 B:4,500	11/18.5	310 [318]	A:304[286] B:261[243]	A:52 B:68	565	175	350	36/36	10[12] [BMT45]
NS 2000L[M]		A:534[516] B:493[475]			580						



6~8inch High Efficiency Y Axis Sub-Spindle Turning Center

Model	Chuck	Spindle Speed (RPM)	Spindle Motor (Cont./Max) (KW)	Max. Turning Dia. (mm)	Max. Turning Length (mm)	Draw Tube ID (mm)	Swing over Bed (mm)	Travels (mm)			Rapid Travels Rate (X/Z)	Number of Tool (ea)
								X-Axis	Y-Axis	Z-Axis		
NS 2100Y	A:6" B:8"	A:6,000 B:4,500	11/18.5	378	A:521.3 B:489	A:52 B:68	820	205	110 (+55)	590	30/10/36	24 [BMT45]
NS 2100SY	A:6/5" B:8/5"	A:6,000/6,000 B:4,500/6,000										
NS 2600Y	10"	3,500	15/18.5	430	624	82	860	250	705	30/10/30	24 [BMT55]	
NS 2600SY	10/6"	3,500/6,000										

※ Chuck : Main Chuck/Sub Chuck

Box Guide Type Turning Center



6~12inch High Performance Turning Center

():Option []:Mill Type

Model	Chuck	Spindle Speed (RPM)	Spindle Motor (Cont./Max) (KW)	Max. Turning Dia. (mm)	Max. Turning Length (mm)	Draw Tube ID (mm)	Swing over Bed (mm)	Travels (mm)		Rapid Travels Rate (X/Z)	Number of Tool (ea)
								X-Axis	Z-Axis		
SL 2000[M]	A:6" B:8"	A:6,000 B:4,500	15/18.5	360	540[520]	A:52 B:68	570	210 [215]	560		12(24) [BMT55]
SL 2100[M]				415 [354]	A:596.5[547.5] B:555.6[506.6]						
SL 2500[M]	A:8" B:10"	A:4,500 B:3,500	15/18.5	430 [405]	A:581[509] B:570[508]	A:68 B:77	654	245	600 [540]	24/30	12(24) [BMT65]
SL 2500X[M]					A:861[789] B:860[788]				880 [820]		
SL 2500L[M]					A:1,081[1,009] B:1,080[1,008]				1,100 [1,040]		
SL 3000[M]					A:570[508] B:544[482]				600 [540]		
SL 3000X[M]	A:10" B:12"	A:3,500 B:3,000	18.5/26	430 [405]	A:860[788] B:834[765]	A:77 B:91			880 [820]		
SL 3000L[M]					A:1,080[1,008] B:1,054[972]				1,100 [1,040]		

Box Guide Type Turning Center



12~15inch High Performance Turning Center

():Option []:Mill Type

Model	Chuck	Spindle Speed (RPM)	Spindle Motor (Cont./Max) (KW)	Max. Turning Dia. (mm)	Max. Turning Length (mm)	Draw Tube ID (mm)	Swing over Bed (mm)	Travels (mm)		Rapid Travels Rate (X/Z)	Number of Tool (ea)	
								X-Axis	Z-Axis			
SL 3500[M]	A: 12" B: 15"	A: 2,500 B: 2,000	18.5/26	500	780 [750]	A: 103 B: 117.5	680	280	855 [825]	20/24	12 [BMT65]	
SL 3500L[M]					1,530 [1,500]				1,605 [1,575]			
SL 4000X[M]					A: 2,128 [2,084] B: 2,087 [2,042]				2,170			20/18
SL 4000L[M]					A: 3,128 [3,084] B: 3,087 [3,042]				3,170			20/24



15~24inch High Performance Turning Center

():Option []:Mill Type

Model	Chuck	Spindle Speed (RPM)	Spindle Motor (Cont./Max) (KW)	Max. Turning Dia. (mm)	Max. Turning Length (mm)	Draw Tube ID (mm)	Swing over Bed (mm)	Travels (mm)		Rapid Travels Rate (X/Z)	Number of Tool (ea)	
								X-Axis	Z-Axis			
SL 4500[M]	A: 18" (15") B: 21" C: 24"	A: 1,800 (2,000) B: 1,500 C: 1,200	30/37	690 [620]	1,250	A: 117.5 B: 140.0 C: 166.5	775	350	1,325	25/24	12 [BMT75]	
SL 4500X[M]					2,225				2,330			20/18
SL 4500L[M]					3,055				3,130			20/10
SL 4500XL[M]					5,000				5,100			



21~32inch High Performance Turning Center

():Option []:Mill Type

Model	Chuck	Spindle Speed (RPM)	Spindle Motor (Cont./Max) (KW)	Max. Turning Dia. (mm)	Max. Turning Length (mm)	Draw Tube ID (mm)	Swing over Bed (mm)	Travels (mm)		Rapid Travels Rate (X/Z)	Number of Tool (ea)
								X-Axis	Z-Axis		
SL 5500[M]	A: 21" (24") C: 32"	A: 1,500 (1,200) C: 1,000	A: 30/45 C: 37/55	690	A: 1,097 [1,079] C: 1,070 [1,052]	A: 166.5 C: 232	900	370	1,130	20/20	12 [BMT75]



21~24inch High Performance Turning Center

():Option []:Mill Type

Model	Chuck	Spindle Speed (RPM)	Spindle Motor (Cont./Max) (KW)	Max. Turning Dia. (mm)	Max. Turning Length (mm)	Draw Tube ID (mm)	Swing over Bed (mm)	Travels (mm)		Rapid Travels Rate (X/Z)	Number of Tool (ea)	
								X-Axis	Z-Axis			
SL 6500[M]	A: 21" B: 24"	A: 1,500 B: 1,200	37/55	900	1,000	140	1,030	470	1,050	12/18	12 [BMT75]	
SL 6500X[M]					2,000				2,050			12/15
SL 6500L[M]					3,200				3,270			12/10
SL 6500XL[M]					5,050				5,100			

Box Guide Type Turning Center



32inch High Performance Turning Center

():Option []:Mill Type

Model	Chuck	Spindle Speed (RPM)	Spindle Motor (Cont./Max) (KW)	Max. Turning Dia. (mm)	Max. Turning Length (mm)	Draw Tube ID (mm)	Swing over Bed (mm)	Travels (mm)		Rapid Travels Rate (X/Z)	Number of Tool (ea)	
								X-Axis	Z-Axis			
SL 8500[M]	32"	500	37/55	900	1,000	232	1,030	470	1,050	12/18	12 [BMT85]	
SL 8500X[M]					2,000				2,050			12/15
SL 8500L[M]					3,200				3,270			12/10
SL 8500XL[M]					5,050				5,100			



6~8inch Y Axis Sub-Spindle Turning Center

():Option []:Mill Type

Model	Chuck	Spindle Speed (RPM)	Spindle Motor (Cont./Max) (KW)	Max. Turning Dia. (mm)	Max. Turning Length (mm)	Draw Tube ID (mm)	Swing over Bed (mm)	Travels (mm)			Rapid Travels Rate (X/Z)	Number of Tool (ea)
								X-Axis	Y-Axis	Z-Axis		
SL 2000Y	A: 6" B: 8"	A: 6,000 B: 4,500	11/18.5	395	A: 490 B: 450	A: 52 B: 68	650	235	105 (±52.5)	580	24/10/30	12 [BMT55]
SL 2000SY	A: 6/6" B: 8/6"	A: 6,000/6,000 B: 4,500/6,000			A: 757.5 B: 716.5							
SL 2000LSY	A: 6" B: 8"	A: 6,000/6,000 B: 4,500/6,000										

※ Chuck : Main Chuck/Sub Chuck



8~10inch Y Axis Sub-Spindle Turning Center

():Option []:Mill Type

Model	Chuck	Spindle Speed (RPM)	Spindle Motor (Cont./Max) (KW)	Max. Turning Dia. (mm)	Max. Turning Length (mm)	Draw Tube ID (mm)	Swing over Bed (mm)	Travels (mm)			Rapid Travels Rate (X/Z)	Number of Tool (ea)			
								X-Axis	Y-Axis	Z-Axis					
SL 2500Y	A: 8" B: 10"	A: 4,500 B: 3,500	A: 11/18.5 B: 18.5/26	360	A: 490 B: 476	A: 68 B: 77	650	235	100 (±50)	580	18/10/24	12 [BMT65]			
SL 2500LY					A: 1,280 B: 1,265					1,375			30/10/30		
SL 2500SY					A: 8/6" B: 10/6"					A: 4,500/6,000 B: 3,500/6,000			A: 490 B: 476	580	18/10/24
SL 2500LSY					A: 1,280 B: 1,265					1,375			30/10/30		

※ Chuck : Main Chuck/Sub Chuck

Box Guide Type Turning Center



12~15inch Y Axis Turning Center

():Option []:Mill Type

Model	Chuck	Spindle Speed (RPM)	Spindle Motor (Cont./Max) (KW)	Max. Turning Dia. (mm)	Max. Turning Length (mm)	Draw Tube ID (mm)	Swing over Bed (mm)	Travels (mm)			Rapid Travels Rate (X/Z)	Number of Tool (ea)
								X-Axis	Y-Axis	Z-Axis		
SL 3500Y				430	A: 795 B: 765			280		865		
SL 3500SY	A: 12"/10" B: 15"/10"	A: 2,500/4,000 B: 2,000/4,000	18.5/26	423	755	A: 103 B: 117.5	850	256	130 (±65)	832	30/10/30	12(24) [BMT65]
SL 3500LY				430	A: 2,125 B: 2,095			280		2,200		

15~18inch Y Axis Turning Center

():Option []:Mill Type



Model	Chuck	Spindle Speed (RPM)	Spindle Motor (Cont./Max) (KW)	Max. Turning Dia. (mm)	Max. Turning Length (mm)	Draw Tube ID (mm)	Swing over Bed (mm)	Travels (mm)			Rapid Travels Rate (X/Z)	Number of Tool (ea)
								X-Axis	Y-Axis	Z-Axis		
SL 4500XY					2,140					2,270	20/15/18	
SL 4500LY	A: 18" (15") B: 21" C: 24"	A: 1,800 (2,000) B: 1,500 C: 1,200	37/55	620	2,930	A: 117.5 B: 140 C: 166.5	975	350	200 (±100)	3,060	20/24/10	12 [BMT75]
SL 4500XY					5,000					5,092	20/15/10	

Vertical Turning Center



12~32inch High Performance Vertical Turning Center

():Option []:Mill Type

Model	Chuck	Spindle Speed (RPM)	Spindle Motor (Cont./Max) (KW)	Max. Turning Dia. (mm)	Max. Turning Length (mm)	Draw Tube ID (mm)	Swing over Bed (mm)	Travels (mm)		Rapid Travels Rate (X/Z)	Number of Tool (ea)
								X-Axis	Z-Axis		
SLV 500[M]	12"(15")	3,000	18.5/26	500	495	-	700	317	495		12 [BMT65]
SLV 800[M]	18" (15",21",24")	2,000	22/30	830	800	-	890	440	800	20/20	12 [BMT75]
SLV 8500[M]				850	780	-		490	780		
SLV 1000[M]	24"(32")	1,800	37/45	1,000	955	-	1,100	540	955		12 [BMT85]

Multi-Axis Turning Center



High Efficiency Multi Axis Turning Center

():Option []:Mill Type

Model	Chuck	Spindle Speed (RPM)	Spindle Motor (Cont./Max) (KW)	Max. Turning Dia. (mm)	Max. Turning Length (mm)	Draw Tube ID (mm)	Swing over Bed (mm)	Travels (mm)			Rapid Travels Rate (X/Z)	Number of Tool (ea)
								X-Axis	Y-Axis	Z-Axis		
NS 1600T2Y2	6"	6,000	3.7/7.5	ø215	483	52/52	215	165	80 (±40)	530	24/15/30	12(24) [BMT55]

Special Purpose Machine



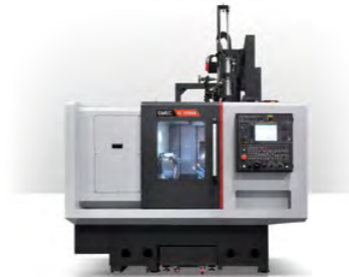
Multitasking Turn-Mill Machine

Model	Chuck	Turning Spindle Speed (RPM)	Milling Spindle Speed (RPM)	Turning Spindle Motor (Cont./Max) (KW)	Milling Spindle Motor (Cont./Max) (KW)	Rapid Travels Rate (X1/X2/Y/Z1/Z2/A/B)			Milling Spindle Tool Shank
STX 2600	10"	4,000	12,000	22/30	15/26	48/24/36/48/36/30/40			BT40



Turning Center for Diff. Case

Model	Chuck	Spindle Speed (RPM)	Spindle Motor (Cont./Max) (KW)	Max. Turning Dia. (mm)	Max. Turning Length (mm)	Draw Tube ID (mm)	Swing over Bed (mm)	Travels (mm)		Rapid Travels Rate (X/Z)	Number of Tool (ea)
								X-Axis	Z-Axis		
PL 25DC	-	2,500	15/18.5	86	-	-	520	-	290	-/24	-



Turning Center for Quartz

Model	Chuck	Spindle Speed (RPM)	Spindle Motor (Cont./Max) (KW)	Max. Turning Dia. (mm)	Max. Turning Length (mm)	Draw Tube ID (mm)	Swing over Bed (mm)	Travels (mm)		Rapid Travels Rate (X/Z)	Number of Tool (ea)
								X-Axis	Z-Axis		
PL 800GB	12"	1,000	11/18.5	650	150	-	800	400	500	16/24	6
SL 1000GB	12"	1,000	11/18.5	820	340	-	1,000	510	500	16/16	6



4 Axis Machining Center for Quartz

Model	Travels (X/Y/Z) (mm)	Spindle Speed (RPM)	Spindle Motor (Cont./Max) (KW)	Table Size (mm)	Max. Workpiece Weight (kg)	Spindle to Table Surface (mm)	Rapid Travels Rate (mm)	Tool Shank	Max. Tool Length / Weight (mm/kg)	Tool Storage Capacity (ea)
MAAC 480	560/480/460	12,000	11/18.5	760x500	200	250-710	24/24/24	BT40	300/8	30
MAAC 600	1,050/600/550			1,300x650	300	150-700				
MVQ 5000	650/520/475	15,000	11/15	650	500	150-625	40/40/40			

5 Axis Machining Center



5 Axis Machining Center

():Option

Model	Travels (X/Y/Z) (mm)	Spindle Speed (RPM)	Spindle Motor (Cont./Max) (KW)	Table Size (mm)	Max. Workpiece Weight (kg)	Spindle to Table Surface (mm)	Rapid Travels Rate (mm)	Tool Shank	Max. Tool Length / Weight (mm/kg)	Tool Storage Capacity (ea)
MVF 4000	650/450/475	12,000	11/18.5	400	250	150-625	40/40/40	BT40	300/8	30(60)
MVF 5000	650/520/475	12,000	11/18.5	650	500	150-625	40/40/40	BT40	300/8	30(60)

Tapping Center

High Speed Tapping Center

():Option



Model	Travels (X/Y/Z) (mm)	Spindle Speed (RPM)	Spindle Motor (Cont./Max) (KW)	Table Size (mm)	Max. Workpiece Weight (kg)	Spindle to Table Surface (mm)	Rapid Travels Rate (mm)	Tool Shank	Max. Tool Length / Weight (mm/kg)	Tool Storage Capacity (ea)
SM 400DH	530/400/415	12,000 (24,000)	5.5/7.5	750 x 400	300	180 - 595	60/60/48	BT30	190/3	2-20
Q 4200	530/420/350		3.7/5.5	650 x 420	250	150 - 500	48/48/48		250/3	21(28)
Q 4200L	700/420/350		850 x 420							

LM Guide Type Machining Center

High Efficiency Machining Center

():Option



Model	Travels (X/Y/Z) (mm)	Spindle Speed (RPM)	Spindle Motor (Cont./Max) (KW)	Table Size (mm)	Max. Workpiece Weight (kg)	Spindle to Table Surface (mm)	Rapid Travels Rate (mm)	Tool Shank	Max. Tool Length / Weight (mm/kg)	Tool Storage Capacity (ea)
PCV 430	700/430/510	10,000 (15,000)	11/18.5	750 x 460	560	130 - 640	48/48/36	BT40	300/8	24
PCV 460	700/460/510	15,000 (10,000)	7.5/15			330 - 840				

High Performance Machining Center

():Option

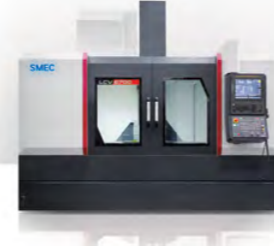


Model	Travels (X/Y/Z) (mm)	Spindle Speed (RPM)	Spindle Motor (Cont./Max) (KW)	Table Size (mm)	Max. Workpiece Weight (kg)	Spindle to Table Surface (mm)	Rapid Travels Rate (mm)	Tool Shank	Max. Tool Length / Weight (mm/kg)	Tool Storage Capacity (ea)
MCV 4500D	560/450/475	12,000	11/18.5	2 - 720 x 610	2 - 250	210 - 685	36/36/36	BT40	300/8	30
MCV 4600	900/460/520			1050 x 460	600	150 - 670	36/36/30			
MCV 5700	1,050/570/520			1,300 x 570	1,000	150 - 670				
MCV 5700L	1,600/570/520			1,700 x 570	1,000	150 - 670	30/36/30			
MCV 6700	1,350/670/650			1,550 x 670	1,300	150 - 800	36/36/30			
MCV 6700L	2,100/670/650			2,200 x 670	1,300	150 - 800	30/30/30			
MCV 8500L	2,540/850/650			2,600 x 850	2,000	150 - 800	30/30/24			

Box Guide Type Machining Center

High Performance Machining Center

():Option



Model	Travels (X/Y/Z) (mm)	Spindle Speed (RPM)	Spindle Motor (Cont./Max) (KW)	Table Size (mm)	Max. Workpiece Weight (kg)	Spindle to Table Surface (mm)	Rapid Travels Rate (mm)	Tool Shank	Max. Tool Length / Weight (mm/kg)	Tool Storage Capacity (ea)	
LCV 550	1,150/550/520	6,000 Gear	11/15	1,200 x 550	800	150 - 670	24/24/20	BT50	300/8	30	
		8,000 Direct	11/18.5						300/15	24(30)	
		12,000 Direct	11/18.5						BT40	300/8	30
LCV 6700	1,350/670/650	6,000 Gear	15/18.5	1,550 x 670	1,000	200 - 850	30/30/24	BT50	300/15	30	
		8,000 Direct	11/15						BT40		300/8
		12,000 Direct	11/18.5								
LCV 850	2,000/850/800	6,000 Gear	15/18.5	2,050 x 850	3,000	200 - 1,000	20/20/16	BT50	300/15	30 (40)	
LCV 1060	2,500/1,060/900			2,800 x 1,060	5,000	200 - 1,100	16/16/16		350/15		

Hybrid Type Machining Center

Hybrid Type Machining Center

():Option



Model	Travels (X/Y/Z) (mm)	Spindle Speed (RPM)	Spindle Motor (Cont./Max) (KW)	Table Size (mm)	Max. Workpiece Weight (kg)	Spindle to Table Surface (mm)	Rapid Travels Rate (mm)	Tool Shank	Max. Tool Length / Weight (mm/kg)	Tool Storage Capacity (ea)
HYST 5700	1,050/570/520	12,000	11/18.5	1,300 x 570	1,000	150 - 670	36/36/30	BT40	300/8	30
HYST 5700L	1,600/570/520			1,700 x 570			30/36/30			
HYST 6700	1,350/670/650	6,000 Gear	11/15	1,550 x 670	1,300	200 - 850	36/36/30	BT50	350/15	
		8,000 Direct	11/18.5						BT40	
HYST 6700L	2,100/670/650	6,000 Gear	11/15	2,200 x 670	1,300	200 - 850	36/36/30	BT50	350/15	
		8,000 Direct	11/18.5						BT40	

Long Bed Type Machining Center

Multi Purpose Long Bed Type Machining Center

():Option



Model	Travels (X/Y/Z) (mm)	Spindle Speed (RPM)	Spindle Motor (Cont./Max) (KW)	Table Size (mm)	Max. Workpiece Weight (kg)	Spindle to Table Surface (mm)	Rapid Travels Rate (mm)	Tool Shank	Max. Tool Length / Weight (mm/kg)	Tool Storage Capacity (ea)
MCV 400XL	3,000/400/350	10,000	5.5/11	3,200 x 420	Fixed Table	150-500	24/48/48	BT30	250/4	24
MCV 400UL	6,200/420/450	10,000	11/15	6,600 x 460		200-650	BT40		300/8	
MCV 510XL	4,000/510/550	12,000	11/18.5	4,600 x 550		150-700		30		
MCV 610XL	4,500/610/550	12,000	11/18.5	5,000 x 610			10,000			

Machining Solution (STD for Machining Center)

S4(SMEC SMOOTH SURFACE SYSTEM) Package

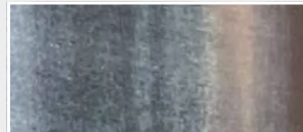
High performance NC options to improve machining performance provided as standard



15 inch LCD monitor standard	
AICC II (AI Contour Control II)	Efficient accel/deceleration (200 block look ahead)
Jerk control	Speed control during acceleration changes
Smooth tolerance plus control	Stable curved shape forming
Machining conditions selection function	Adjust accuracy level according to machining conditions
Machining quality selection function	
Manual Guide i	Visual machining check and setup guide
Data server	Transfer large program files
Part program storage	2MB (5,120M)
Number of registered programs	1,000ea



Without S4 Package



With S4 Package

IoT Solution (OPT)



NC-Gate Basic Platform



IoT-Gate Expansion Platform

NC-Gate / IoT-Gate

The NC-Gate / IoT-Gate that was developed in-house with our ICT technology is a universal gateway that not only interworks with our machine tools, but machine tools from other manufacturers, robots, automation equipment, and analog / digital sensors as a network device capable of bi-directional communication.

Supported drivers : Fanuc / Mitsubishi / Siemens NC, Modbus TCP, DeviceNet, Profibus, Ethernet, AI/DI/DO

KPI (Key Performance Indexes)



Provides key performance indicators and displays target achievement

Indicators : achievement rate, productivity, process defect rate, equipment and factory usage, quality defect rate, lead time, and average cycle time

OEE (Overall Equipment Effectiveness)



Provides figures and graphs of overall equipment effectiveness

Availability, performance, quality, etc.

Realtime Monitoring



Provides operation status and alarm information in case of problems in the production line

Provides information about the operation status, speed, production alarms, etc. of each machine

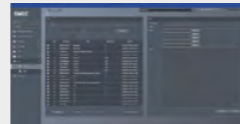
Remote Control/Management



Remote control and operation

Emergency stop switch, program editing, etc.

Remote A/S



Problem diagnosis via remote control

Provide remote diagnosis services to users via the IoT solution

SMEC User Interface



SMEC FANUC i PLUS Series

Machining Center

- 10.4"/15" LCD color display
- Portable M.P.G

Turning Center

- 10.4"/15" LCD color display
- Manual Guide i

Common Features

- Part program size 2MB
- High quality designed OP Panel
- SMEC Custom S/W

SMEC Custom S/W displayed using MDI's button or OP Panel's button

◀ **CUSTOM** : Provide operator convenience and improve productivity using the support function for tool management and additional device setting.

SMEC HMI



M/G-Code check function



PMC alarm check function



Work coordinates, tool setting support function



Counter for each T-Code



ATC Magazine status check, setting and maintenance function



Simplified tailstock Setting